

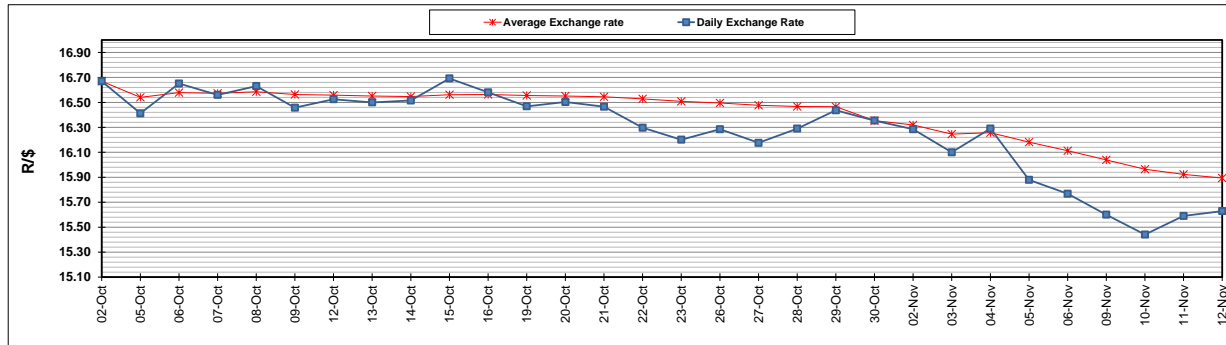
	PETROL 95 ULP	PETROL 93 ULP & LRP	DIESEL 0.05%	DIESEL 0.005%	ILL. PAR.
GAUTENG PUMP PRICE (SA c/l) AS FROM 04/11/2020	1,459.000	1,439.000	-	-	-
WHOLESALE PRICE (SA c/l) AS FROM 04/11/2020	-	-	1,225.560	1,227.960	655.828
SINGLE NATIONAL MAXIMUM RETAIL PRICE	-	-	-	-	818.000
BASIC FUEL PRICE - 12/11/2020 (SA c/l)	496.871	488.317	499.578	500.965	483.391
PRESS RELEASE CONTRIBUTION TO BFP 04/11/2020 - 12/11/2020 (SA c/l)	506.470	496.470	474.630	477.030	451.128
UNIT OVER/(UNDER) RECOVERY - 12/11/2020 (SA c/l)	9.599	8.153	(24.948)	(23.935)	(32.263)
AVERAGE BASIC FUEL PRICE 30/10/2020 - 12/11/2020	477.464	469.085	471.845	474.609	455.856
AVERAGE UNIT OVER/(UNDER) RECOVERY 30/10/2020 - 12/11/2020	37.106	35.485	6.385	5.721	(9.228)

ANALYSIS MOVEMENT OF AVERAGE OVER/(UNDER) RECOVERY

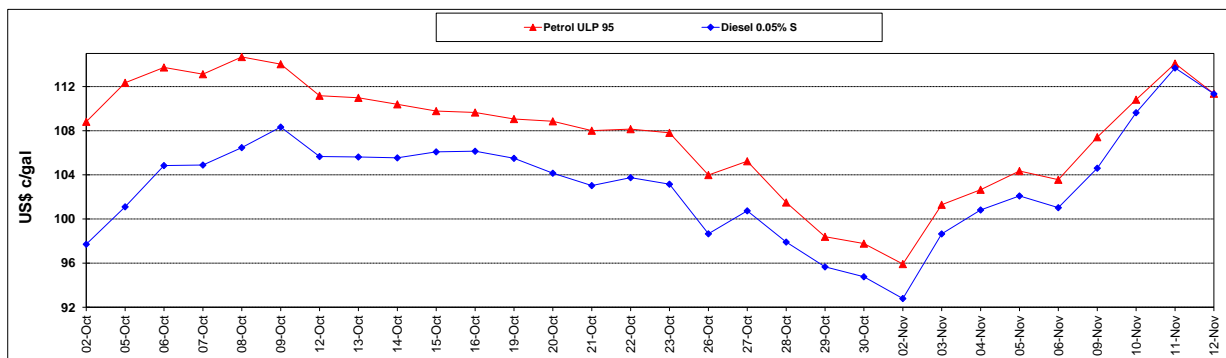
	PETROL 95	PETROL 93	DIESEL 0.05%	DIESEL 0.005%	ILL. PAR.
- MOVEMENT IN INTERNATIONAL PRODUCT PRICES	19.919	18.600	(10.599)	(11.363)	(25.637)
- MOVEMENT IN EXCHANGE RATE	17.187	16.885	16.984	17.084	16.409
AVERAGE UNIT OVER/(UNDER) RECOVERY 30/10/2020 - 12/11/2020	37.106	35.485	6.385	5.721	(9.228)

R/\$ EXCHANGE RATE - (R/\$15.6290 - 12/11/2020)

EXCHANGE RATE USED IN BASIC FUEL PRICE



INTERNATIONAL PRODUCT PRICES OF BASKET USED IN BASIC FUEL PRICE



BASIC FUEL PRICE IN SA CENTS PER LITRE

